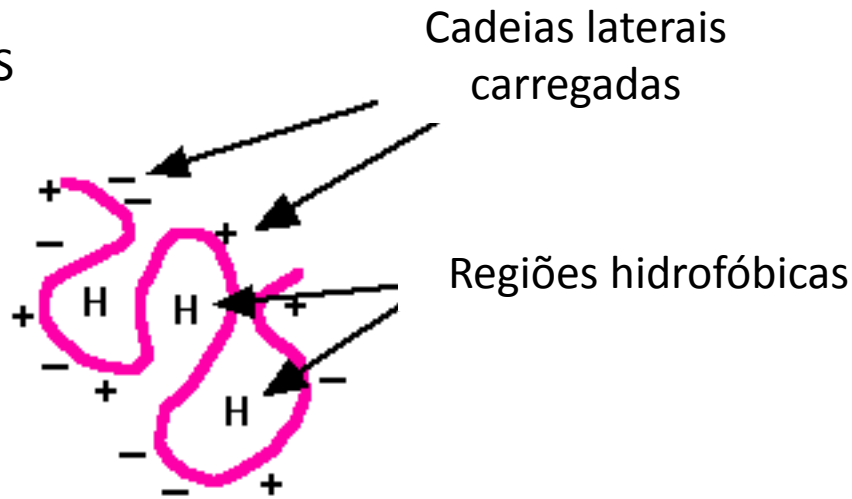


SDS-PAGE

PolyAcrylamide Gel Electrophoresis

O efeito do SDS (*sodium dodecyl sulfate*) nas proteínas

Sem SDS

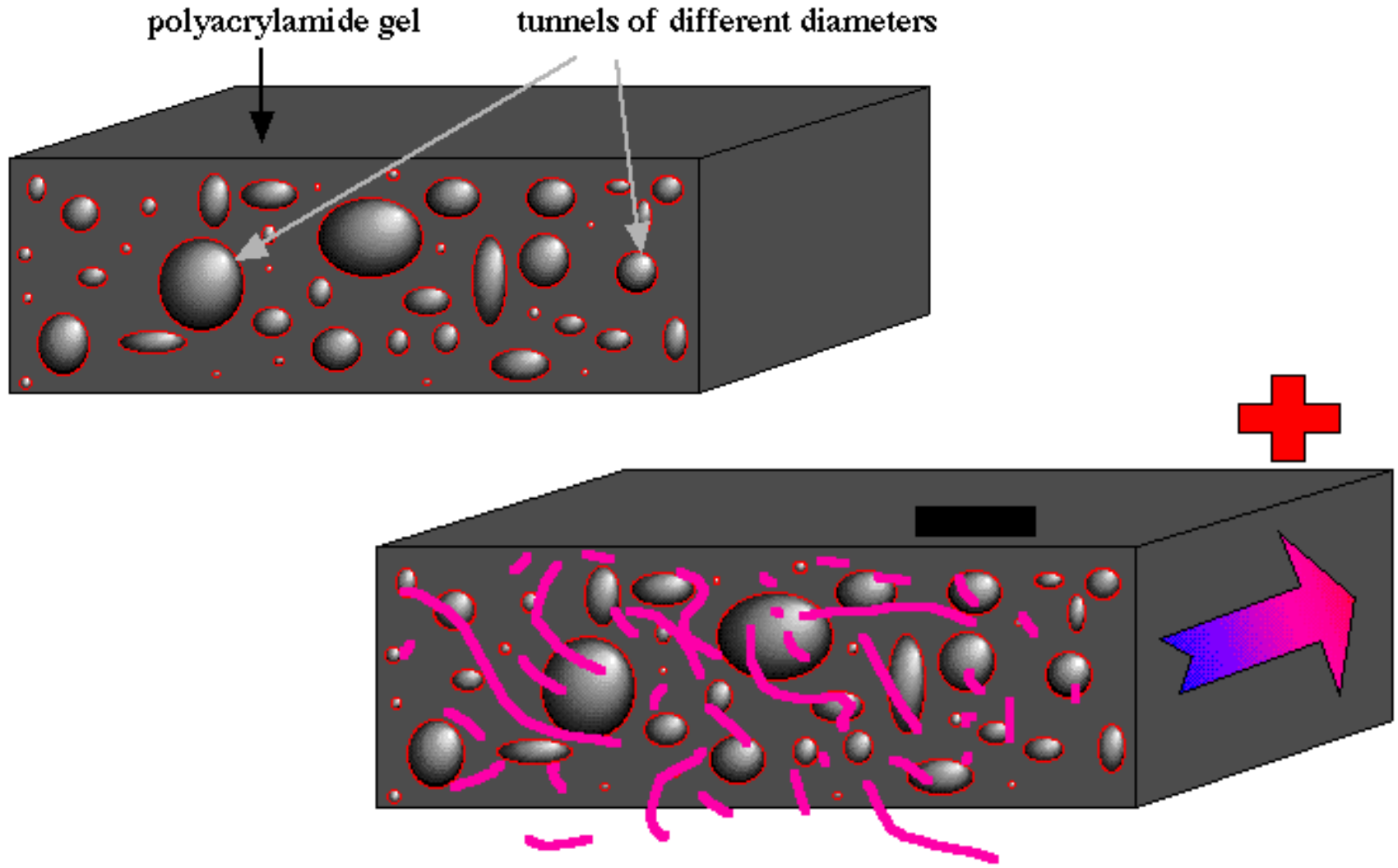


Sob saturação:
1,4g SDS/g proteína

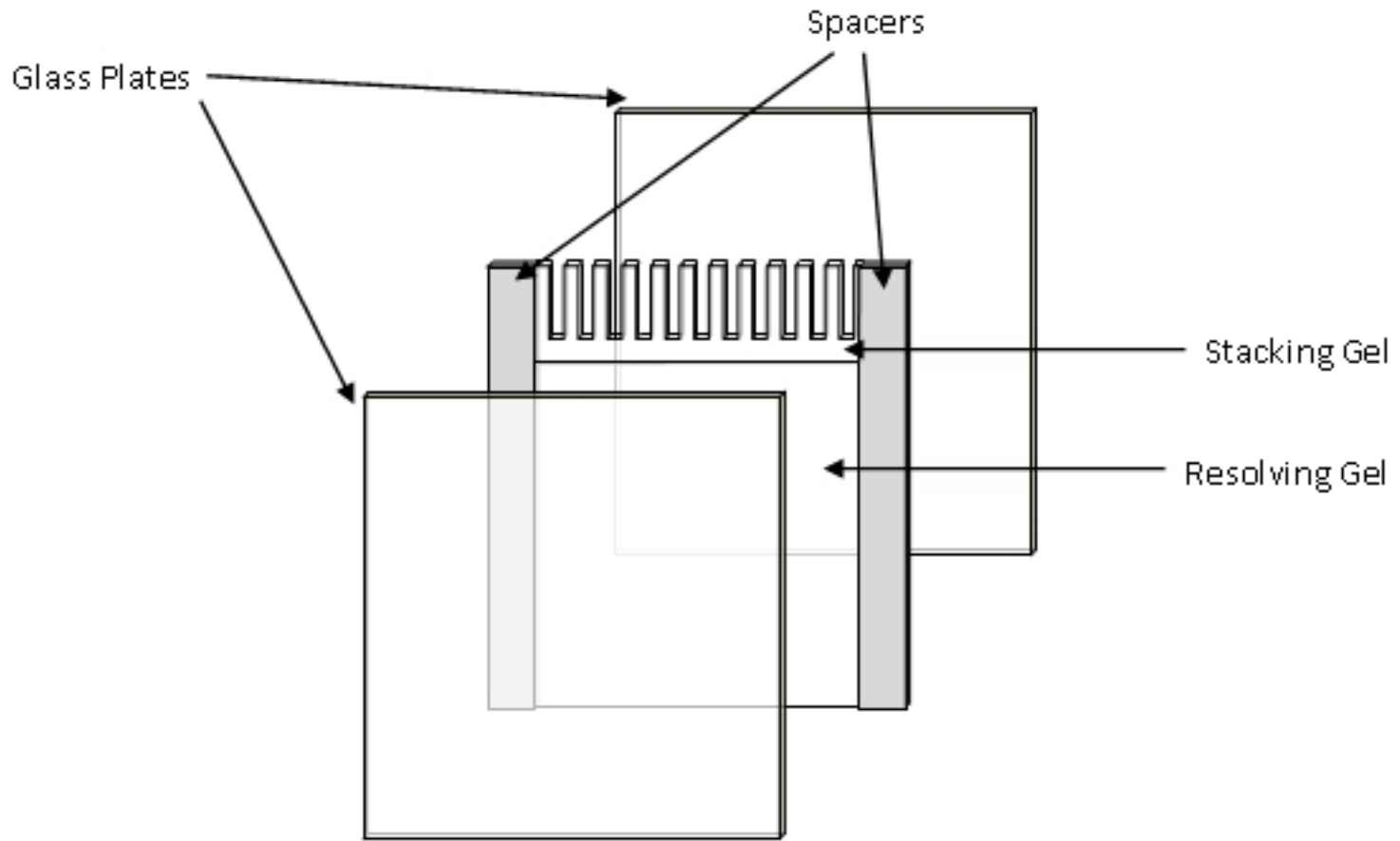
Com SDS



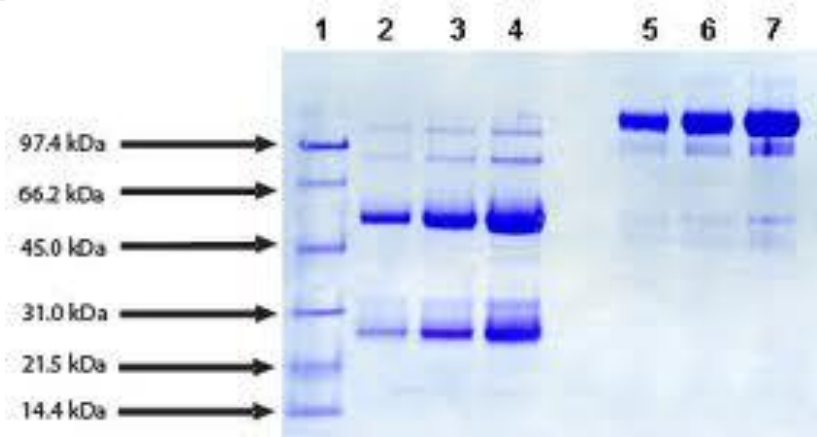
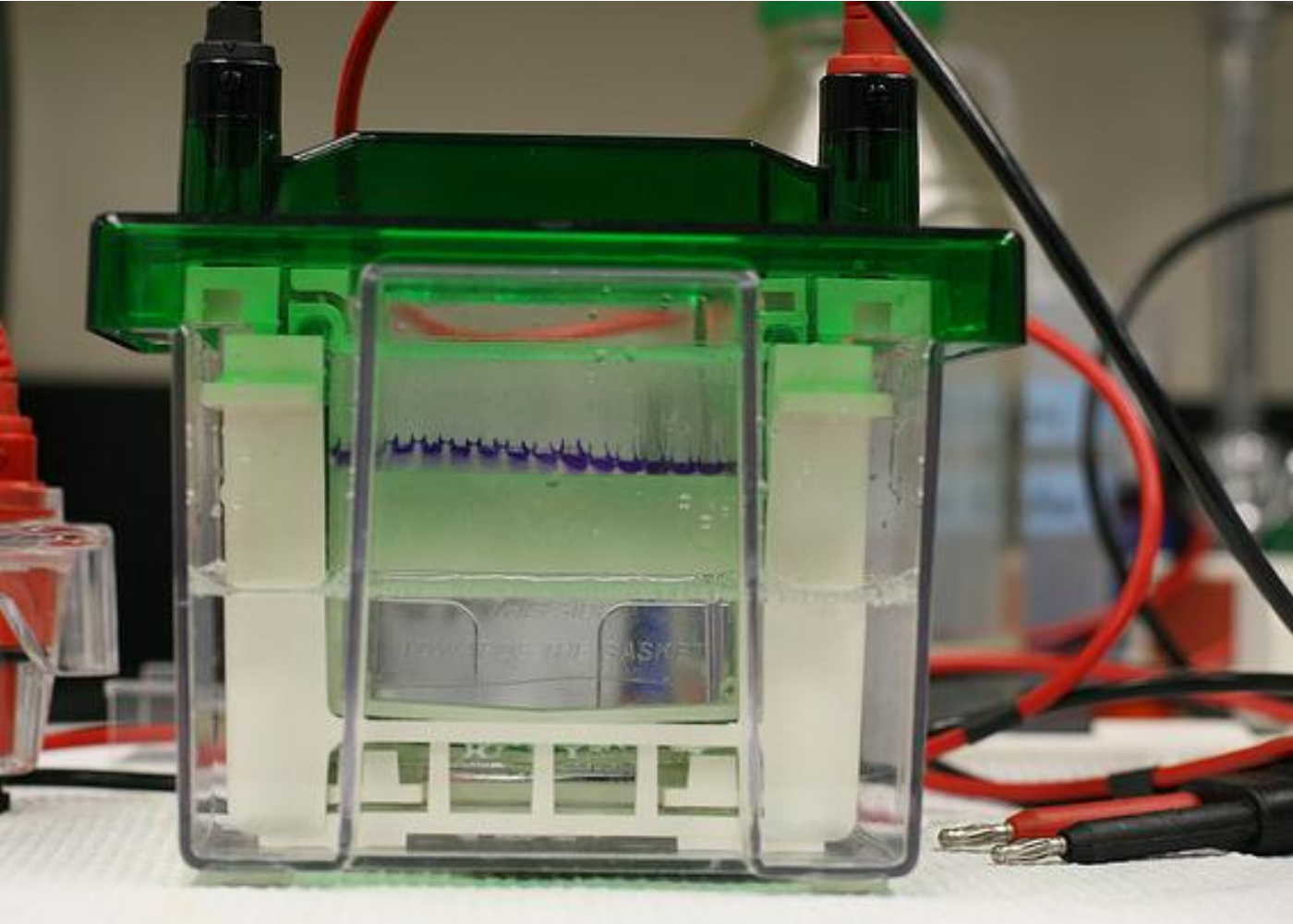
Gel de poliacrilamida



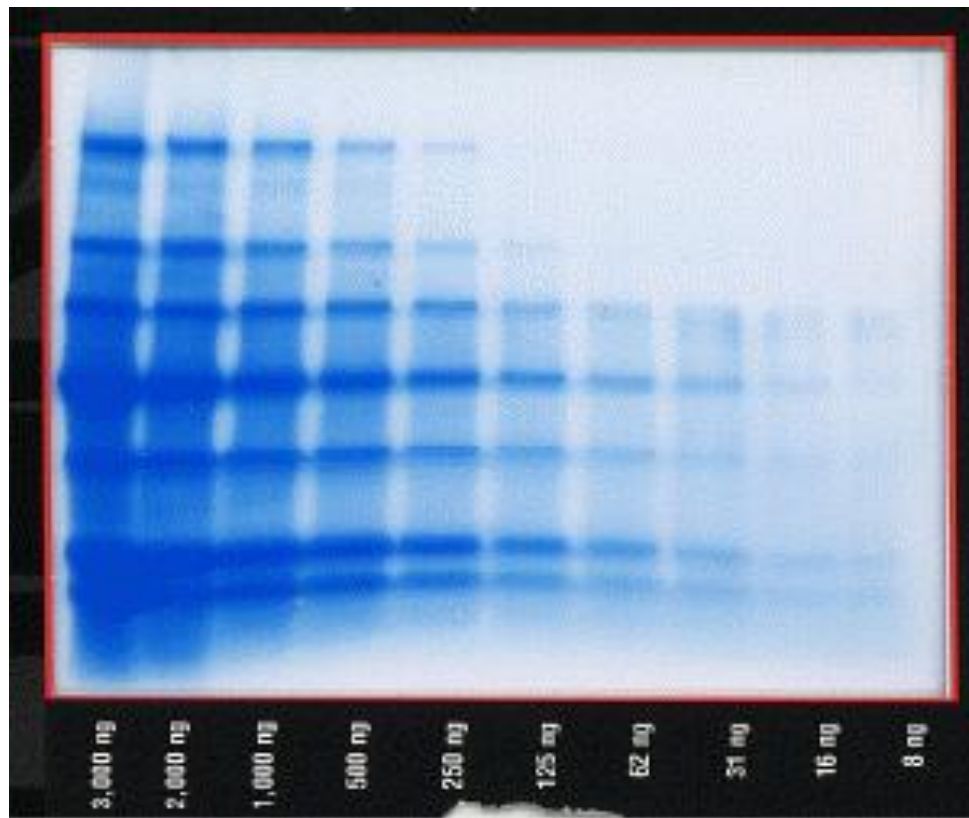
Montagem do gel de poliacrilamida



SDS-Page Gel Setup



Coloração com *Coomassie*



Expressão *cas2*